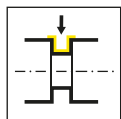


模块化刀柄系列 850
用于舒特多轴自动化机床
用于切槽，切断
和仿形切槽刀片

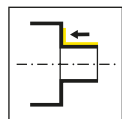
MODULAR HOLDER SYSTEM 850 FOR
SCHÜTTE MULTI-SPINDLE AUTOS
FOR GROOVING, PARTING-OFF
AND FORM GROOVING INSERTS

基础信息

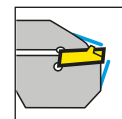
General Information



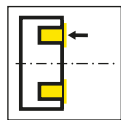
外圆切槽
External grooving



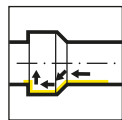
外圆车削
External side turning



定向冷却
Targeted coolant



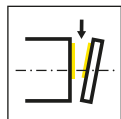
端面切槽
Face grooving



镗孔和仿形
Boring and profiling



内冷
Internal coolant



切断
Parting off

所有尺寸均以毫米为单位
除非另有说明

All dimensions are in mm,
unless otherwise stated.

交期:

- ▲ 库存
- △ 4周

用于材料组:

- 推荐
- 次推荐
- 不合适

Delivery times:

- ▲ on stock
- △ 4 weeks

Use for material groups:

- recommended
- alternative recommendation
- not suitable

HORN连接接口代码-它需要做什么?

连接接口代码确保您始终能够找到适当的刀具，并显示在刀柄和刀片上。如果编码匹配，则可以在相应的刀柄中使用刀片。

这也适用于我们的模块化刀柄系统，其中连接代码表示刀柄和刀夹之间的接口。

The HORN connection interface code - what is it needed for?

The connection interface code ensures that you will always find the appropriate tools and is shown on toolholders and inserts. If the codes match, the insert can be used in the corresponding toolholder.

This also applies to our modular holder system, where the connection code indicates the interface between the holder and the cassette.

HORN-连接接口代码和可能的组合:

HORN connection interface codes and possible combinations:

HIS = 刀片座 / Insert seat

HWS = 工件侧接口 / Interface workpiece side

HMS = 机床侧接口 / Interface machine side

HIS	↔	HWS
HMS	↔	HWS

范例刀片

Example insert

产品型号 Part number	w	r	t _{max}	s	HIS	AL96	AS42	AS45	AS46	TC92	TF45	TN35
L315.0200.02	2	0,2	3	5,4	31505L	△	▲			△	△	▲

范例刀夹

Example cassette

产品型号 Part number	t _{max}	f ₃	f ₂	D _{max}	l _K	HWS	HMS
RNK356.0850.4.25.IK	5	f ₃ =f ₂	16,3	185	29	31505L	220001

范例刀夹的接纳器

Example adapter for cassettes

产品型号 Part number	h	b	f	l ₁	HWS
R850.0220R.49.00.IK	60	40	13,6	20,5	220001

不同之处： 更多可能

THE DIFFERENCE: MORE POSSIBILITIES

- **适合于系列 ECX, SCX, ACX**

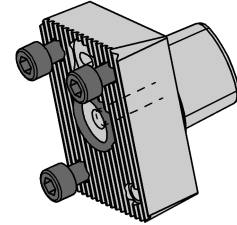
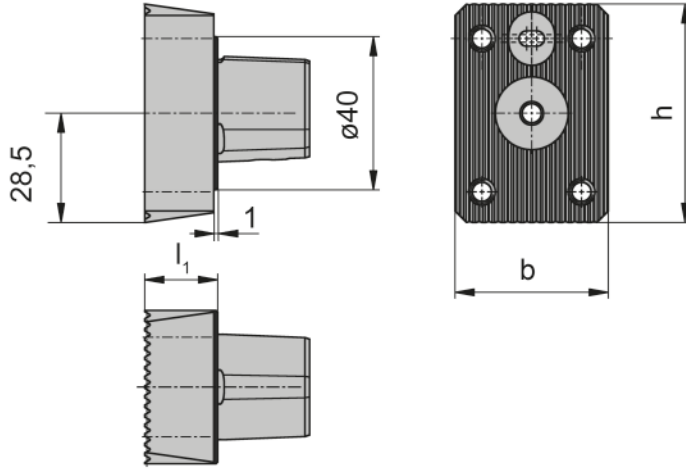
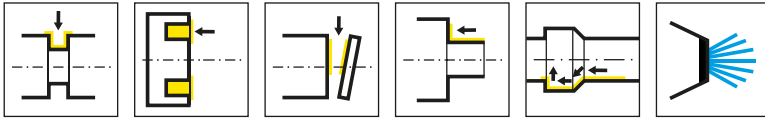
Suitable for the series ECX,
SCX, ACX

- **高度调节简单方便**

Simple and easily accessible
height adjustment

- **定向冷却作用于侧面和前刀面**

Targeted cooling on flank and
rake face

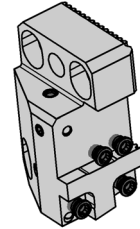
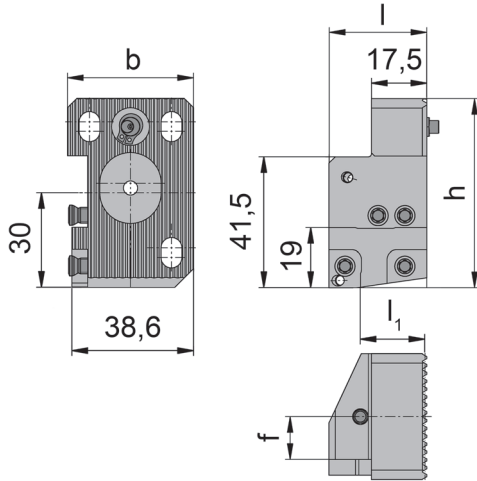
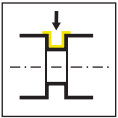


产品型号 Part number	h	b	l_1
N850.00C3.01	57	40	18,5
N850.00C4.01	57	40	18,5

刀夹的接纳器

Adapter for cassettes

R850

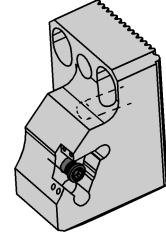
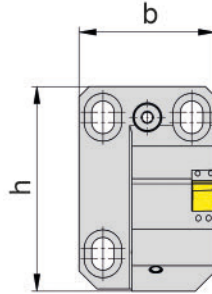
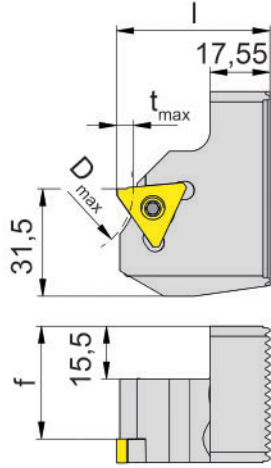
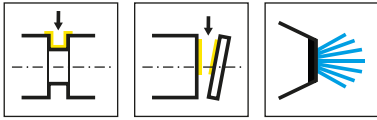


产品型号 Part number	h	b	f	l ₁	l	HWS
R850.0220R.49.00.IK	60	40	13,6	20,5	31,05	220001 • 220001

配件

Spare Parts

刀夹的接纳器 Adapter for cassettes	锁紧螺钉 Clamping Screw	TORX PLUS®-扳手 TORX PLUS® Wrench
R850.0220R.49.00.IK	5.12T20P	T20PQ



产品型号 Part number	t _{max}	b	f	D _{max}	l	h	HWS
R850.0315.00.07.IK	5	40	33,1	40	45	60	31507R
R850.0315.00.10.IK	5	40	29,9	40	45	60	31510R
R850.0315.00.13.IK	5	40	26,9	40	45	60	31503R

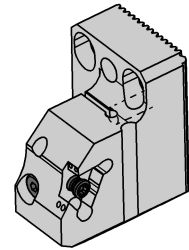
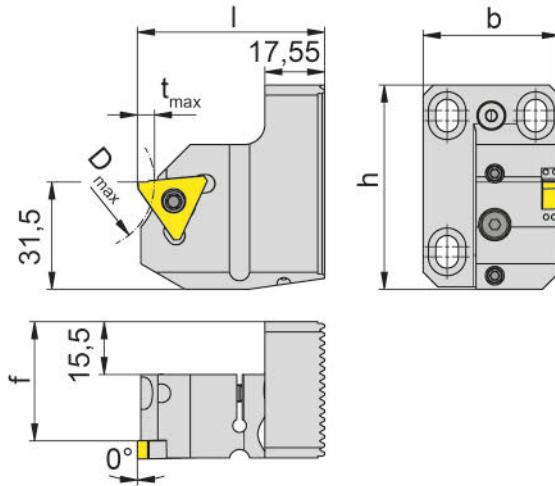
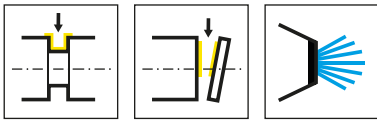
槽深与外径 ϕ 的对应关系
Depth of groove in relation to work piece ϕ

D _{max}	t _{max}
40	5
50	4
65	3

配件

Spare Parts

刀夹 Cassette	锁紧螺钉 Clamping Screw	TORX PLBS®-扳手 TORX PLBS® Wrench
R850...	5.15T20P	T20PQ



可通过角度调整对正刀片
Insert can be aligned by angle adjustment

产品型号 Part number	t _{max}	b	f	D _{max}	l	h	HWS
R850.0315.01.05.IK	5	40	34,9	40	55	60	31505L
R850.0315.01.07.IK	5	40	33,1	40	55	60	31507R
R850.0315.01.10.IK	5	40	29,9	40	55	60	31510R
R850.0315.01.13.IK	5	40	26,9	40	55	60	31503R

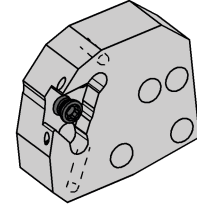
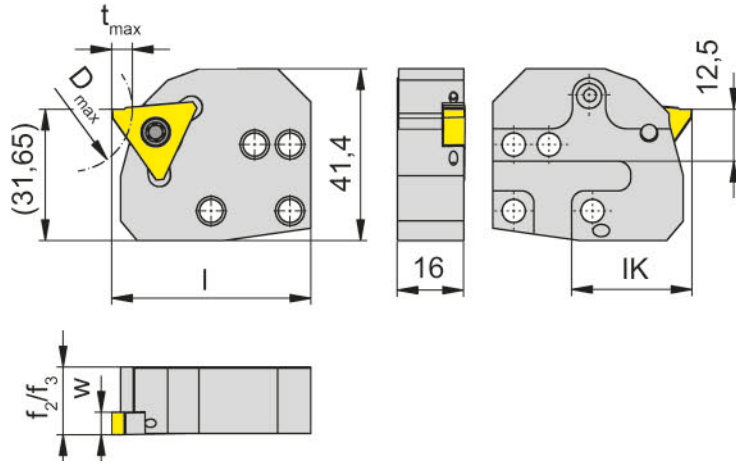
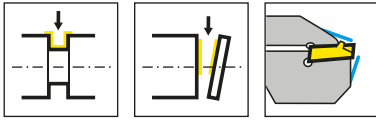
槽深与外径 ϕ 的对应关系
Depth of groove in relation to work piece ϕ

Dmax	tmax
40	5
50	4
65	3

配件

Spare Parts

刀夹 Cassette	锁紧螺钉 Clamping Screw	TORX PLUS®-扳手 TORX PLUS® Wrench
R850.0315.01.05.IK	5.12T20P	T10PL
R850.0315.01...	5.15T20P	T10PL



产品型号 Part number	t_{max}	f_3	f_2	D_{max}	l_K	HWS	HMS
RNK356.0850.4.25.IK	5	$f_3=f_2$	16,3	185	29	31505L	220001

w 详见可转位刀片
w see indexable inserts

槽深与外径 ϕ 的对应关系
Depth of groove in relation to work piece ϕ

D_{max}	t_{max}
30	5
40	4,5
60	4
115	3,5
185	3

配件

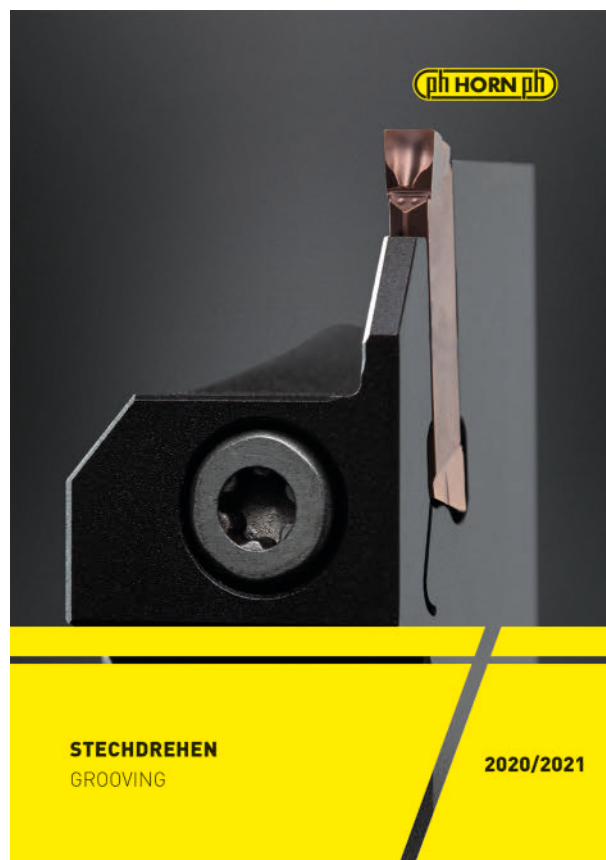
Spare Parts

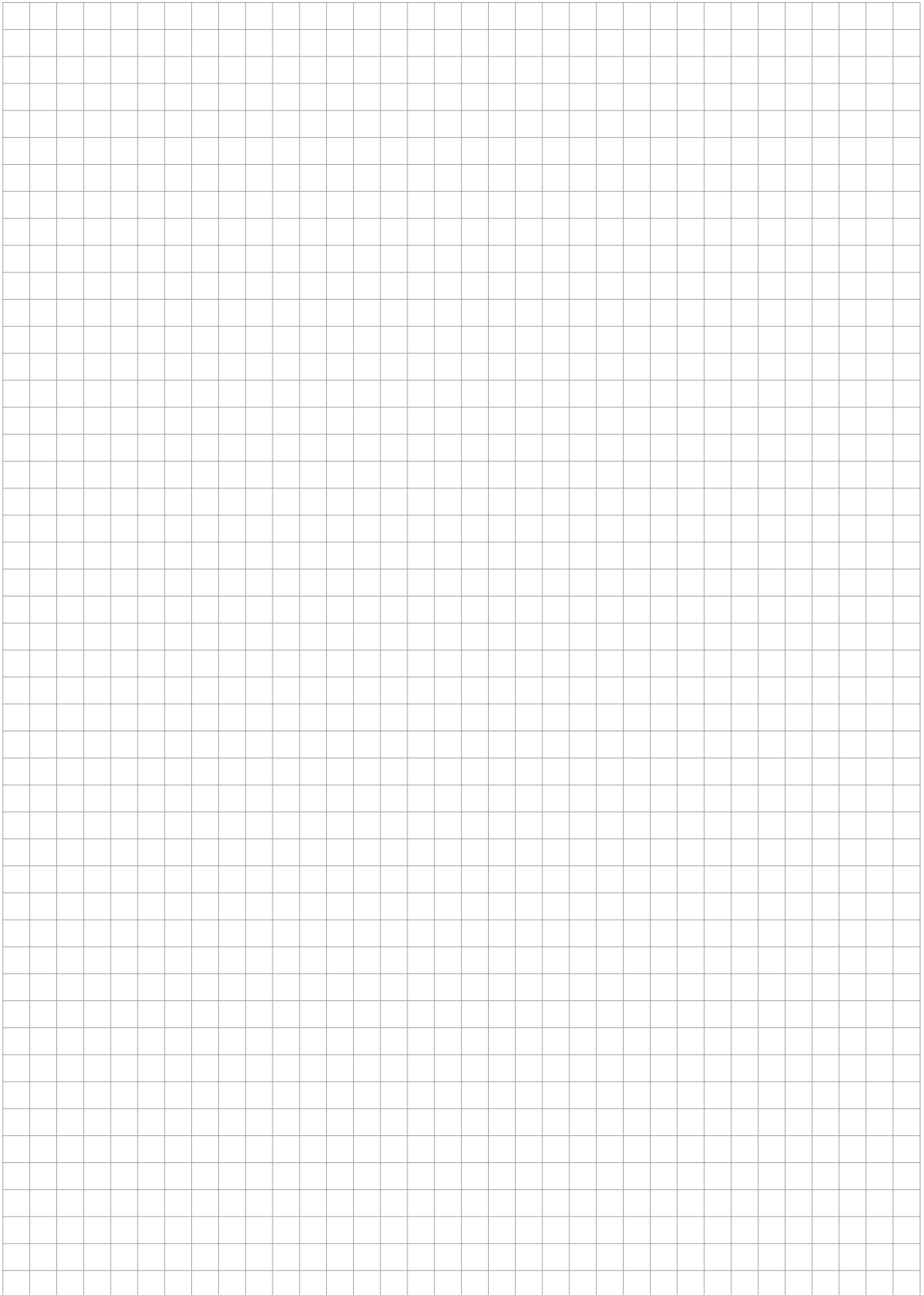
刀夹 Cassette	锁紧螺钉 Clamping Screw	TORX PLUS®-扳手 TORX PLUS® Wrench
RNK356.0850.4.25.IK	5.12T20P	T20PQ



更多刀片详见我们的“槽加工”样本，章节P

For the available inserts please see our catalogue GROOVING, chapter P.







找到您合适的刀具解决方案

FIND YOUR RIGHT
TOOLING SOLUTION NOW.

horn-group.com

DEUTSCHLAND, STAMMSITZ

GERMANY, HEADQUARTERS

—

Hartmetall Werkzeugfabrik
Paul Horn GmbH
Horn-Straße 1
D-72072 Tübingen

Tel +49 7071 / 70040

Fax +49 7071 / 72893

info@de.horn-group.com

horn-group.com

CHINA

—

HORN (Shanghai) Trading Co. Ltd.
Room 905, No. 518 Anyuan Road, P.R. of
China Putuo District, Shanghai 200060
上海市安远路518号905室 邮编：200060

Tel +86 21 52833505 ; 52833205

Fax +86 21 52832562

info@phorn.cn

www.phorn.cn