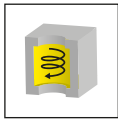


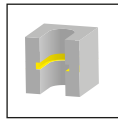


全新圆形铣削系列
911,913和928
9刃圆形铣削
高性能刀盘及刀片

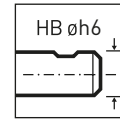
NEW CIRCULAR MILLING
SYSTEMS 911, 913 AND 928
9-EDGE CIRCULAR MILLING CUTTER
INSERTS FOR HIGHER PERFORMANCE



圆形槽铣削
Circular groove milling



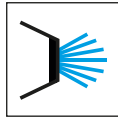
内孔槽铣削
Internal groove milling



刀柄形式
Shank form



齿数
Number of teeth



内冷却
Internal coolant

除非另有说明，所有尺寸的单位是毫米。

All dimensions are in mm, unless otherwise stated.

交货期:

- ▲ 库存产品
- △ 4 周

用于材料组:

- 推荐
- 选择性推荐
- 不合适

Delivery times:

- ▲ on stock
- △ 4 weeks

Use for material groups:

- recommended
- alternative recommendation
- not suitable

HORN的连接代码--需要它做什么？

连接代码确保你总是能找到合适的刀具，并显示在刀柄和刀片上。如果代码相符，刀片可以在相应的刀柄上使用。

这也适用于我们的模块化刀柄系统，连接代码表示导杆和刀夹之间的接口。

The HORN connection interface code - what is it needed for?

The connection interface code ensures that you will always find the appropriate tools and is shown on toolholders and inserts. If the codes match, the insert can be used in the corresponding toolholder.

This also applies to our modular holder system, where the connection code indicates the interface between the holder and the cassette.

HORN连接代码和可能的组合：

HORN connection interface codes and possible combinations:

HIS = 刀片座 / Insert seat

HWS = 工件端接口 / Interface workpiece side

HMS = 机床端接口 / Interface machine side

HIS	↔	HWS
HMS	↔	HWS

刀片型号举例

Example insert

产品名称 Part number	Ds	w	s	b x 45°	r	t _{max}	Z	HIS	EC55
913.0150.00	21,7	1,5	5,7	0,05	-	4,5	9	313113R	▲

刀杆举例

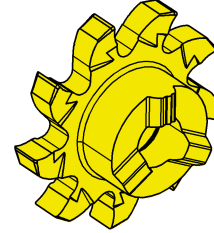
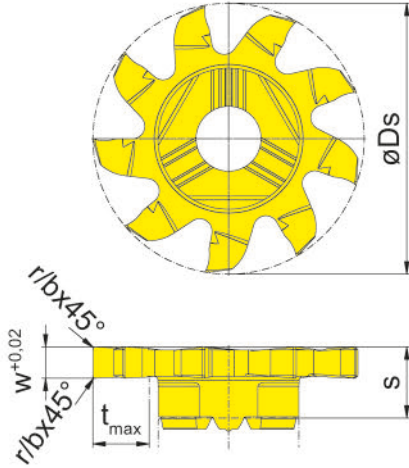
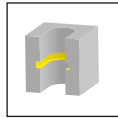
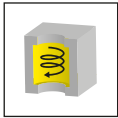
Example toolholder

产品名称 Part number	d	l ₁	l ₂	d ₁	Form	HWS
M313.0012.01A	12	100	-	-	A	313113R • 313113L

不同之处： 更多可能

THE DIFFERENCE: MORE POSSIBILITIES

- **更高的进给带来更短的加工时间**
Shorter machining time due to higher feed rate
- **数量更多的切削刃带来更长的刀具寿命**
Longer tool life due to larger number of cutting edges
- **加工成本的降低**
Reduction in production costs



硬质合金牌号

Carbide grades

▲ 4周

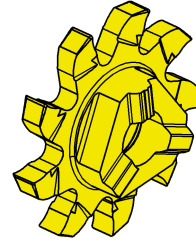
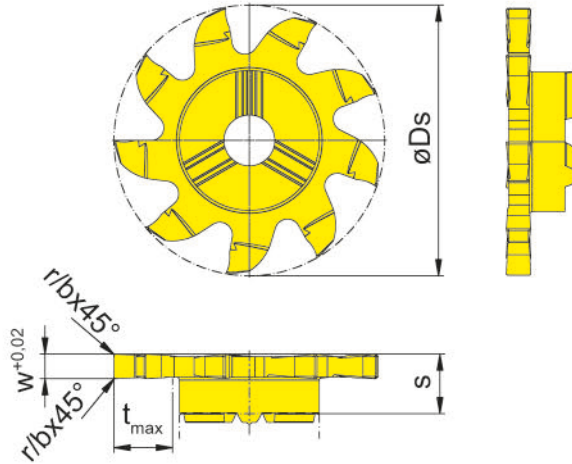
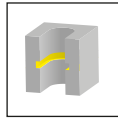
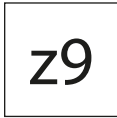
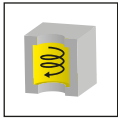
4 weeks

如图 = 右手型

Picture = right hand cutting version

▲ 库存
on stock

产品型号 Part number	Ds	w	s	b x 45°	r	t _{max}	Z	HIS	EG55	IG65
911.0150.00	17,7	1,5	6,1	0,05	-	3,5	9	311090R	▲	△
911.0200.00	17,7	2	6,1	-	0,2	3,5	9	311090R	▲	△
911.0250.00	17,7	2,5	6,1	-	0,2	3,5	9	311090R	▲	△
911.0300.00	17,7	3	6,1	-	0,2	3,5	9	311090R	▲	△
									P ● ●	
									M ○ ●	
									K ○ -	
									N - -	
									S - ○	
									H - -	



如图 = 右手型

Picture = right hand cutting version

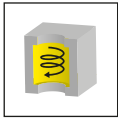
硬质合金牌号

Carbide grades

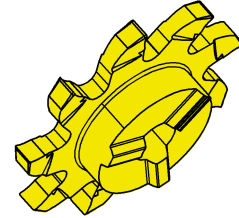
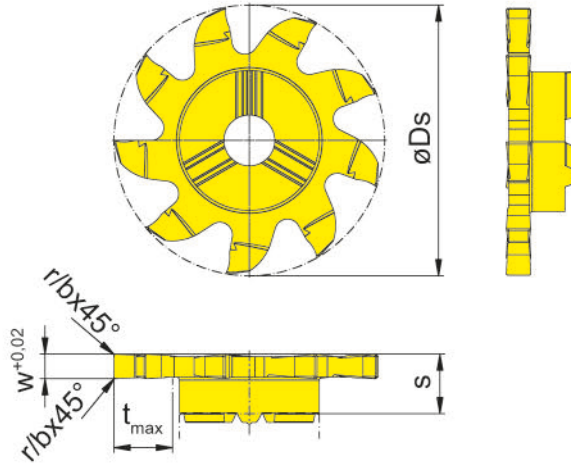
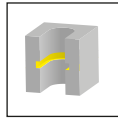
▲ 库存
on stock

△ 4周
4 weeks

产品型号 Part number	Ds	w	s	b x 45°	r	t _{max}	Z	HIS	EG55	IG65
913.0150.00	21,7	1,5	5,7	0,05	-	4,5	9	313113R	▲	△
913.0200.00	21,7	2	5,7	-	0,2	4,5	9	313113R	▲	△
913.0250.00	21,7	2,5	5,7	-	0,2	4,5	9	313113R	▲	△
913.0300.00	21,7	3	5,7	-	0,2	4,5	9	313113R	▲	△
									P ● ●	
									M ○ ●	
									K ○ -	
									N - -	
									S - ○	
									H - -	



z9



如图 = 右手型

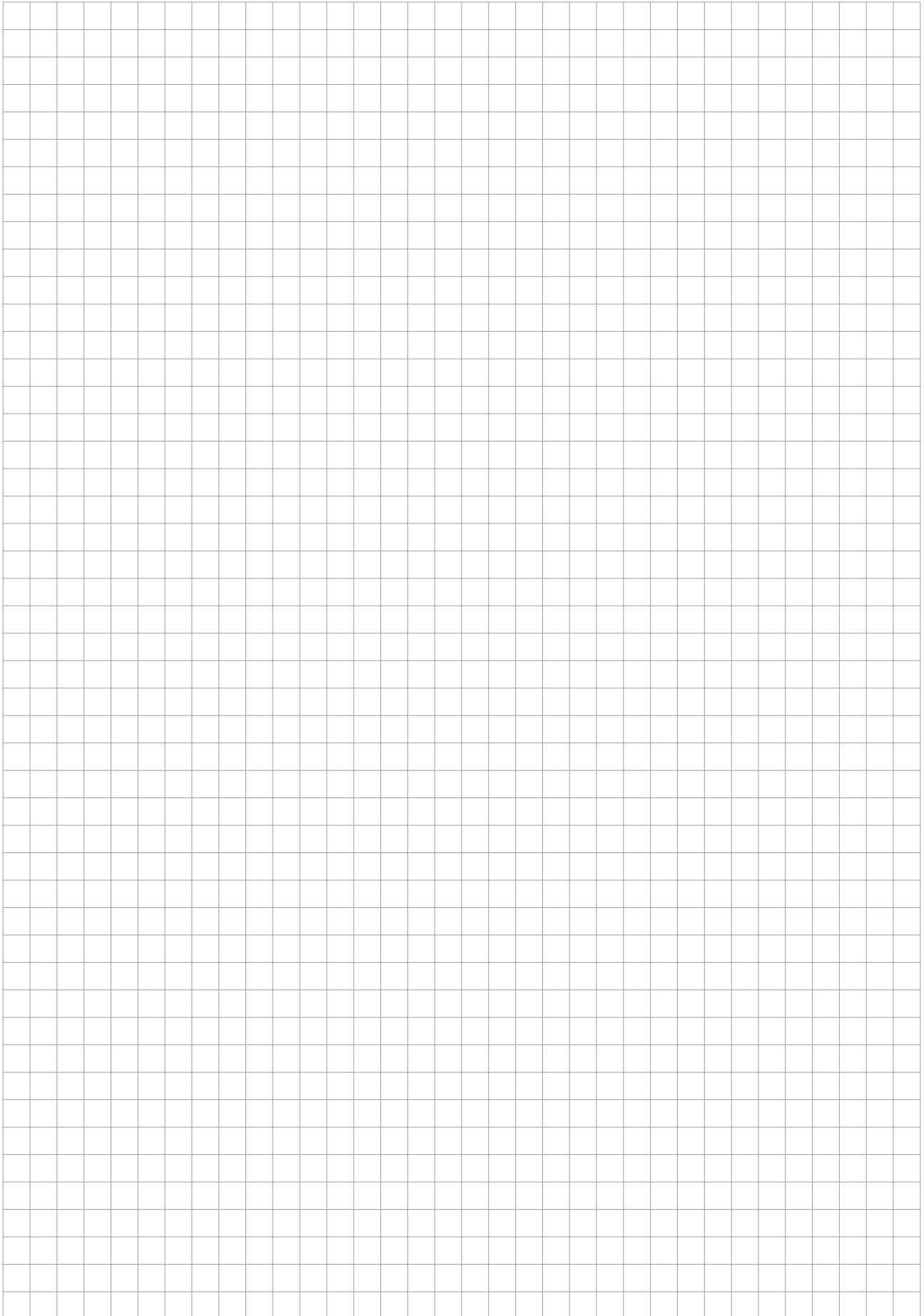
Picture = right hand cutting version

HM-Sorten
Carbide grades

▲ 库存
on stock

Δ 4周
4 weeks

产品型号 Part number	Ds	w	s	b x 45°	r	t _{max}	Z	HIS	EG55	IG65
928.0150.00	27,7	1,5	6,1	0,05	-	6,5	9	328143R	▲	Δ
928.0200.00	27,7	2	6,1	-	0,2	6,5	9	328143R	▲	Δ
928.0250.00	27,7	2,5	6,1	-	0,2	6,5	9	328143R	▲	Δ
928.0300.00	27,7	3	6,1	-	0,2	6,5	9	328143R	▲	Δ
									P ● ●	
									M ○ ●	
									K ○ -	
									N - -	
									S - ○	
									H - -	





现在就可以找到合适你的刀具
解决方案。

FIND YOUR RIGHT
TOOLING SOLUTION NOW.

horn-group.com

德国, 总部

GERMANY, HEADQUARTERS—
Hartmetall Werkzeugfabrik
Paul Horn GmbH
Horn-Straße 1
D-72072 Tübingen

Tel +49 7071 / 70040
Fax +49 7071 / 72893

info@de.horn-group.com
horn-group.com

CHINA 中国

—
HORN (Shanghai) Trading Co. Ltd.
Room 905, No. 518 Anyuan Road, P.R. of
China Putuo District, Shanghai 200060
上海市安远路518号905室 邮编:200060

Tel +86 21 52833505;52833205
Fax +86 21 52832562

info@phorn.cn
www.phorn.cn