

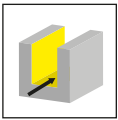


## M475槽和切断铣削系统

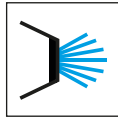
四个切削刃

配有高性能涂层刀片

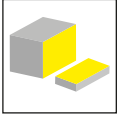
**M475 GROOVE AND  
CUT-OFF MILLING SYSTEM** FOUR  
USABLE CUTTING EDGES WITH HIGH-  
PERFORMANCE COATING



铣槽  
Groove milling



内冷  
Internal coolant



铣断  
Slot milling

无特殊说明外，所有尺寸单位为mm.

All dimensions are in mm, unless otherwise stated.

### 交期

▲ 有库存  
△ 4周

### 适用切削材质

● 推荐  
○ 可选  
- 不适合

Delivery times: Use for material groups:

▲ on stock ● recommended  
△ 4 weeks ○ alternative recommendation  
- not suitable

### HORN连接接口代码-它需要做什么?

连接接口代码确保您始终能够找到适当的刀具，并显示在刀柄和刀片上。如果编码匹配，则可以在相应的刀柄中使用刀片。  
这也适用于我们的模块化刀柄系统，其中连接代码表示刀柄和刀夹之间的接口。

#### The HORN connection interface code - what is it needed for?

The connection interface code ensures that you will always find the appropriate tools and is shown on toolholders and inserts. If the codes match, the insert can be used in the corresponding toolholder. This also applies to our modular holder system, where the connection code indicates the interface between the holder and the cassette.

#### HORN连接接口代码及可能的组合:

HORN connection interface codes and possible combinations:

**HIS** = 刀片座 / Insert seat

**HWS** = 工件侧接口 / Interface workpiece side

HIS	↔	HWS
HMS	↔	HWS

**HMS** = 机床侧接口 / Interface machine side

### 刀片范例

Example insert

产品型号 Part number	w	r	s	b <sub>s</sub>	HIS	RC4G
<b>S475.0273.10.02</b>	5	0,2	2,73	2,7	475027N	▲

### 刀杆实例

Example toolholder

产品型号 Part number	Z	Ds	t <sub>max</sub>	d <sub>2</sub>	b <sub>2</sub>	d <sub>3</sub>	w	n <sub>max</sub>	HWS
<b>M475.0080.27.05</b>	10	80	18	27	8	40	5	22000	475027N

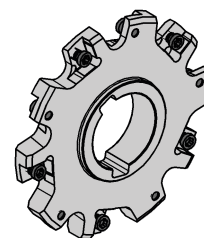
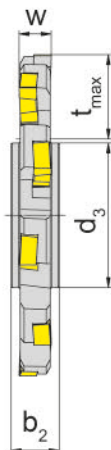
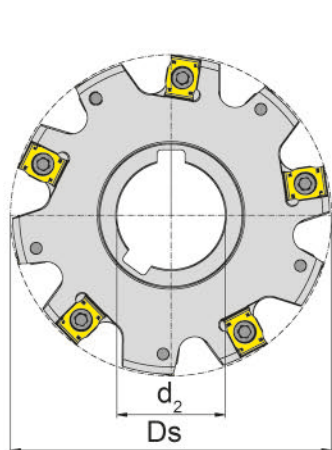
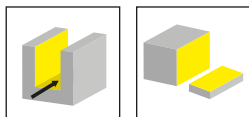
# 不同之处 更多可能

## THE DIFFERENCE: MORE POSSIBILITIES

- **更多的数量有效切削刃，效率更高** Higher efficiency due to larger number of effective cutting edges
- **新涂层正刀片几何型体** Positive insert geometry with new grade
- **中置刀片便于操作** Neutral inserts for easy handling

# 盘铣刀 Disc Milling Cutter

# M475



产品型号 Part number	Z	Ds	t <sub>max</sub>	d <sub>2</sub>	b <sub>2</sub>	d <sub>3</sub>	w	n <sub>max</sub>	HWS
M475.0080.27.05	10	80	18	27	8	40	5	22000	475027N
M475.0100.32.05	12	100	25	32	8	46	5	19000	475027N
M475.0125.40.05	16	125	32	40	10	54	5	17000	475027N
M475.0160.40.05	20	160	50	40	10	54	5	14000	475027N
M475.0200.40.05	26	200	70	40	10	54	5	12000	475027N
M475.0080.27.06	10	80	21	27	10	36	6	21000	475032N
M475.0100.32.06	12	100	25,5	32	10	47	6	18000	475032N
M475.0125.40.06	16	125	32,5	40	10	58	6	15000	475032N
M475.0160.40.06	20	160	50	40	10	58	6	13000	475032N
M475.0200.50.06	26	200	63,5	50	10	71	6	11000	475032N
M475.0080.27.08	10	80	21	27	12	36	8	17000	475043N
M475.0100.32.08	12	100	25,5	32	12	47	8	15000	475043N
M475.0125.40.08	16	125	32,5	40	12	58	8	12000	475043N
M475.0160.40.08	20	160	50	40	12	58	8	10000	475043N
M475.0200.50.08	26	200	63,5	50	12	71	8	8000	475043N

带有键槽的芯轴 (d2)标准DIN138  
Bore (d2) with longitudinal keyway to DIN 138

## 备件

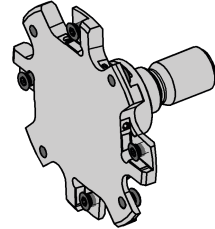
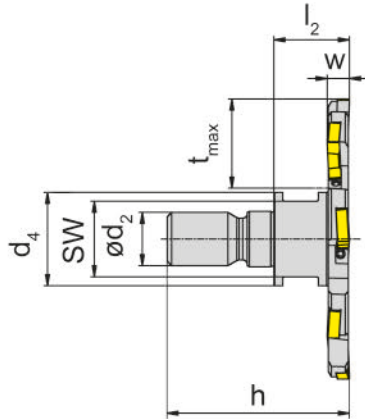
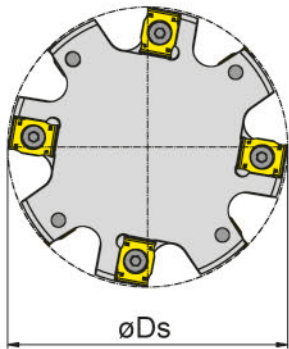
Spare Parts

芯轴铣刀 Arbor Mounted Cutter	锁紧螺钉 Claming screw	TORX PLUS®-花头螺钉扳手 TORX PLUS® Wrench
M475...05	030.3541.T8P	T8PL
M475...06	030.3550.T10P	T10PL
M475...08	030.350P.1110	T15PQ

# 螺纹锁紧铣刀

Screw-in cutter

# M475

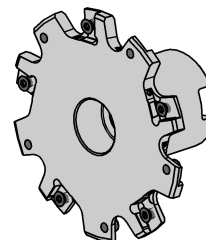
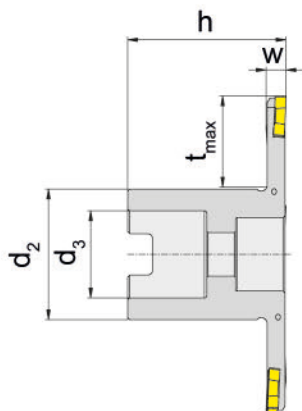
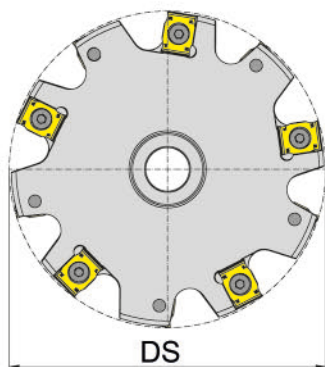
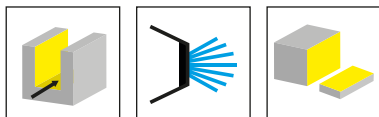


螺纹锁紧铣刀 Part number	Z	Ds	h	$l_2$	$d_4$	$d_2$	SW	w	$t_{max}$	$n_{max}$	HWS
M475.0040.M8.05.IK	4	40	33	15	13	M8	10	5	13	35000	475027N
M475.0050.M10.05.IK	6	50	35	15	18	M10	15	5	15	30000	475027N
M475.0063.M12.05.IK	8	63	41	17	21	M12	17	5	20	26000	475027N

## 备件

Spare Parts

螺纹锁紧铣刀 Screw-in cutter	锁紧螺钉 Claming screw	TORX PLUS®-梅花扳手 TORX PLUS® Wrench
M475...	030.3541.T8P	T8PL



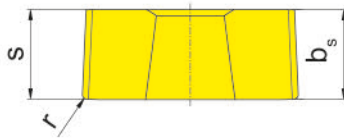
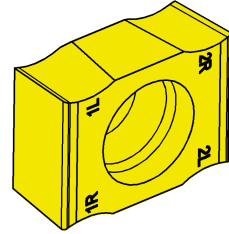
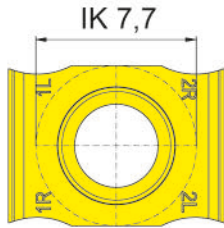
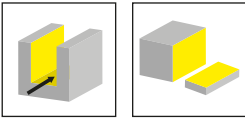
产品型号 Part number	Z	Ds	t <sub>max</sub>	h	d <sub>3</sub>	d <sub>2</sub>	n <sub>max</sub>	w	HWS
M475.0063.16.05.1K	8	63	17,5	35	16	32	26000	5	475027N
M475.0080.16.05.1K	10	80	25	40	16	28	22000	5	475027N
M475.0080.22.05.1K	10	80	23	40	22	33	22000	5	475027N
M475.0100.27.05.1K	12	100	25	50	27	48	19000	5	475027N
M475.0125.27.05.1K	16	125	37,5	50	27	48	17000	5	475027N
M475.0125.32.05.1K	16	125	32,5	50	32	56	17000	5	475027N
M475.0125.40.05.1K	16	125	26,5	50	40	70	17000	5	475027N
M475.0160.40.05.1K	20	160	44	50	40	70	14000	5	475027N
M475.0200.40.05.1K	26	200	64	50	40	70	12000	5	475027N
M475.0100.27.06.1K	12	100	25	50	27	48	18000	6	475032N
M475.0125.32.06.1K	16	125	32	50	32	56	15000	6	475032N
M475.0160.40.06.1K	20	160	44	60	40	70	13000	6	475032N
M475.0200.40.06.1K	26	200	54	50	40	90	11000	6	475032N
M475.0100.27.08.1K	12	100	25	50	27	48	15000	8	475043N
M475.0125.32.08.1K	16	125	32	50	32	56	12000	8	475043N
M475.0160.40.08.1K	20	160	44	60	40	70	10000	8	475043N
M475.0200.40.08.1K	26	200	54	50	40	90	8000	8	475043N

键槽的孔(d3)符合DIN 138  
Bore [d3] with cross keyway to DIN 138

### 备件

Spare Parts

芯轴铣刀 Arbor Mounted Cutter	锁紧螺钉 Claming screw	TORX PLUS®-梅花扳手 TORX PLUS® Wrench
M475...05	030.3541.T8P	T8PL
M475...06	030.3550.T10P	T10PL
M475...08	030.350P.1110	T15PQ



硬质合金牌号  
Carbide grades

▲ 库存  
on stock

△ 无库存4周  
4 weeks

转位刀片 Part number	b <sub>s</sub>	r	s	HIS	RC4G
S475.0273.10.02	2,7	0,2	2,73	475027N	▲
S475.0274.10.04	2,71	0,4	2,74	475027N	△
S475.0275.10.05	2,72	0,5	2,75	475027N	△
S475.0275.10.08	2,73	0,8	2,75	475027N	△
S475.0275.10.10	2,75	1	2,75	475027N	△
S475.0276.10.12	2,76	1,2	2,76	475027N	△
S475.0323.10.02	3,2	0,2	3,23	475032N	▲
S475.0324.10.04	3,21	0,4	3,24	475032N	△
S475.0325.10.05	3,22	0,5	3,25	475032N	△
S475.0325.10.08	3,23	0,8	3,25	475032N	△
S475.0325.10.10	3,25	1	3,25	475032N	△
S475.0326.10.12	3,26	1,2	3,26	475032N	△
S475.0327.10.15	3,27	1,5	3,27	475032N	△
S475.0433.10.02	4,3	0,2	4,33	475043N	▲
S475.0434.10.04	4,31	0,4	4,34	475043N	△
S475.0435.10.05	4,32	0,5	4,35	475043N	△
S475.0435.10.08	4,33	0,8	4,35	475043N	△
S475.0435.10.10	4,35	1	4,35	475043N	△
S475.0436.10.12	4,36	1,2	4,36	475043N	△
S475.0437.10.15	4,37	1,5	4,37	475043N	△
S475.0439.10.20	4,39	2	4,39	475043N	△

更多切削参数请见扉页“号恩新涂层RC2/RC4” ( INF06.22DE)  
For cutting data please see our flyer " NEW HORN COATING RC2/RC4" (INF06.22DE)

P	●
M	●
K	●
N	-
S	-
H	-



**FINDEN SIE JETZT IHRE  
PASSENDE WERKZEUGLÖSUNG.**

FIND YOUR RIGHT  
TOOLING SOLUTION NOW.

**horn-group.com**

**DEUTSCHLAND, STAMMSITZ**

GERMANY, HEADQUARTERS

—

Hartmetall Werkzeugfabrik  
Paul Horn GmbH  
Horn-Straße 1  
D-72072 Tübingen

Tel +49 7071 / 70040

Fax +49 7071 / 72893

info@de.horn-group.com

horn-group.com

**CHINA**

—

HORN (Shanghai) Trading Co. Ltd.  
Room 905, No. 518 Anyuan Road,  
P.R. of China Putuo District,  
Shanghai 200060 上海市安远路518  
号905室 邮编: 200060

Tel +86 21 52833505 ; 52833205

Fax +86 21 52832562

info@phorn.cn

www.phorn.cn