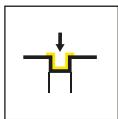


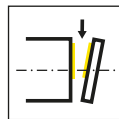


新刀柄用于系列 S224
侧面锁紧切削刀片
良好的实用性

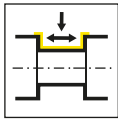
NEW TOOLHOLDER FOR SYSTEM S224
SIDE CLAMPING OF CUTTING INSERTS
FOR GOOD ACCESSIBILITY



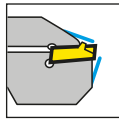
切槽
Grooving



切断
Parting off



车削
Side turning



定向冷却
Targeted coolant

所有尺寸均以毫米为单位
除非另有说明

All dimensions are in mm,
unless otherwise stated.

交期:

- ▲ 库存
- Δ 4 周

用于材料组:

- 推荐
- 次推荐
- 不合适

Delivery times:

- ▲ on stock
- Δ 4 weeks

Use for material groups:

- recommended
- alternative recommendation
- not suitable

HORN连接接口代码-它需要做什么？

连接接口代码确保您始终能够找到适当的刀具，并显示在刀柄和刀片上。如果编码匹配，则可以在相应的刀柄中使用刀片。这也适用于我们的模块化刀柄系统，其中连接代码表示刀柄和刀夹之间的接口。

The HORN connection interface code - what is it needed for?

The connection interface code ensures that you will always find the appropriate tools and is shown on toolholders and inserts. If the codes match, the insert can be used in the corresponding toolholder. This also applies to our modular holder system, where the connection code indicates the interface between the holder and the cassette.

HORN-连接接口代码和可能的组合:

HORN connection interface codes and possible combinations:

HIS = 刀片座 / Insert seat

HWS = 工件侧接口 / Interface workpiece side

HMS = 机床侧接口 / Interface machine side

HIS	↔	HWS
HMS	↔	HWS

范例刀片

Example insert

产品型号 Part number	w	r	HIS	EC35	IG66
S224.0200.10	2	0,05	224028	▲	Δ

范例刀柄

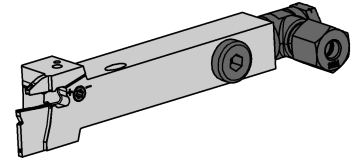
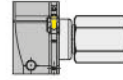
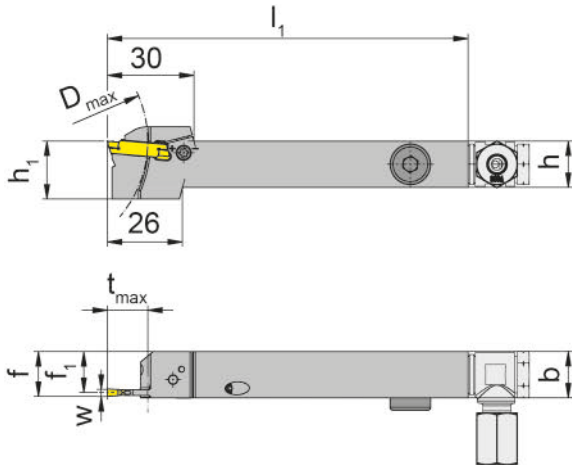
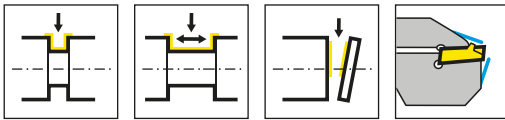
Example toolholder

产品型号 Part number	h	b	l_1	h_1	f_1	f	D_{max}	t_{max}	HWS
RH224.1616.05.62.IK	16	16	125	16	14,2	$f_1+w/2$	80	14	224028

不同之处: 更多可能

THE DIFFERENCE: MORE POSSIBILITIES

- **刀片实现快速更换由于侧面夹紧**
Quick insert change due to side clamping
- **设计用于瑞士型车床**
Designed for use on Swiss-type lathes
- **减少机床停机时间**
Less machine downtime



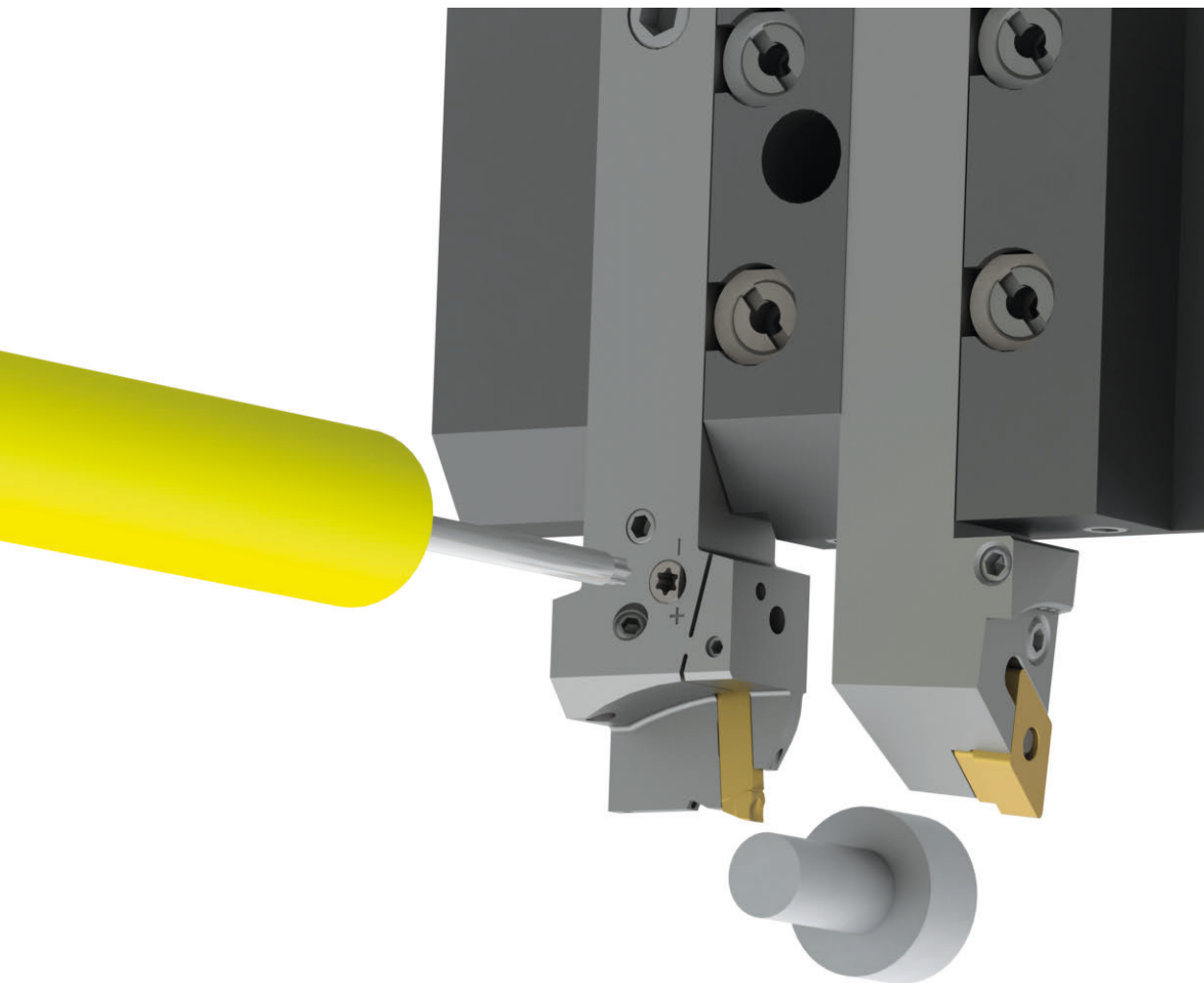
产品型号 Part number	h	b	l_1	h_1	f_1	f	D_{max}	t_{max}	HWS
RH224.1616.05.62.IK	16	16	125	16	14,2	$f_1+w/2$	80	14	224028
RH224.1616.05.63.IK	16	16	125	16	14,2	$f_1+w/2$	80	14	224038
LH224.1616.05.62.IK	16	16	125	16	14,2	$f_1+w/2$	80	14	224028
LH224.1616.05.63.IK	16	16	125	16	14,2	$f_1+w/2$	80	14	224038

w 详见可转位刀片
w see indexable inserts

配件

Spare Parts

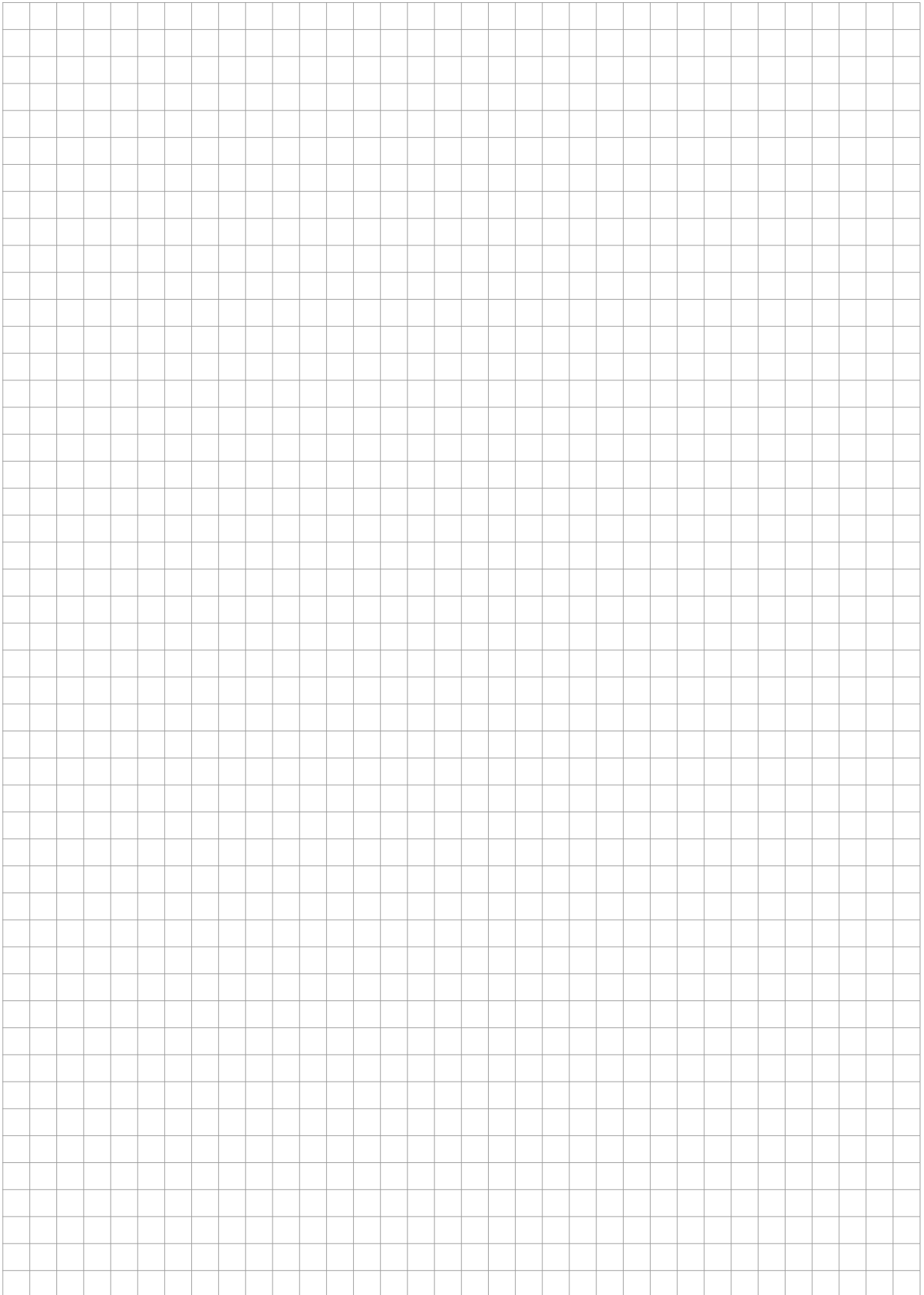
刀柄 Toolholder	冷却接头 Coolant supply	螺纹堵头 Screw Plug
R/LH224...	004.00.16	004.00.26



更多刀片详见我们的“槽加工”样本，章节G

For the available inserts please see our catalogue GROOVING, chapter G.







找到您合适的刀具解决方案

FIND YOUR RIGHT
TOOLING SOLUTION NOW.

horn-group.com

DEUTSCHLAND, STAMMSITZ

GERMANY, HEADQUARTERS

—

Hartmetall Werkzeugfabrik
Paul Horn GmbH
Horn-Straße 1
D-72072 Tübingen

Tel +49 7071 / 70040

Fax +49 7071 / 72893

info@de.horn-group.com

horn-group.com

CHINA

—

HORN (Shanghai) Trading Co. Ltd.
Room 905, No. 518 Anyuan Road, P.R. of
China Putuo District, Shanghai 200060
上海市安远路518号905室 邮编：200060

Tel +86 21 52833505 ; 52833205

Fax +86 21 52832562

info@phorn.cn

www.phorn.cn