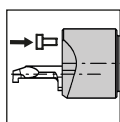
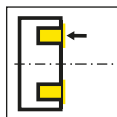


SUPERMINI 端面夹紧套件
端面夹紧刀柄

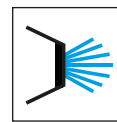
SUPERMINI FACE CLAMPING KIT
TOOLHOLDER WITH FACE CLAMPING



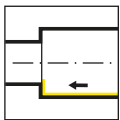
端面夹紧
Face clamping



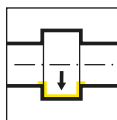
端面切槽
Face grooving



内冷
Internal cooling



内孔镗削
Internal boring



内孔切槽
Grooving internal

所有尺寸均以毫米为单位
除非另有说明

All dimensions are in mm,
unless otherwise stated.

交期:

- ▲ 库存
- △ 4 周

用于材料组:

- 推荐
- 次推荐
- 不合适

Delivery times:

- ▲ on stock
- △ 4 weeks

Use for material groups:

- recommended
- alternative recommendation
- not suitable

HORN 连接接口代码-它需要做什么?

连接接口代码确保您始终能够找到适当的刀具，并显示在刀柄和刀片上。如果编码匹配，则可以在相应的刀柄中使用刀片。

这也适用于我们的模块化刀柄系统，其中连接代码表示刀柄和刀夹之间的接口。

The HORN connection interface code - what is it needed for?

The connection interface code ensures that you will always find the appropriate tools and is shown on toolholders and inserts. If the codes match, the insert can be used in the corresponding toolholder.

This also applies to our modular holder system, where the connection code indicates the interface between the holder and the cassette.

HORN-连接接口代码和可能的组合:

HORN connection interface codes and possible combinations:

HIS = 刀片座 / Insert seat

HWS = 工件侧接口 / Interface workpiece side

HMS = 机床侧接口 / Interface machine side

HIS	↔	HWS
HMS	↔	HWS

范例刀片

Example insert

产品型号 Part number	r	f	a	d	b	l_2	l_5	t_{max}	D_{min}	α	HIS	CB10	CB35
R105.1813.00.1.2.B	0,05	1,3	1,7	1,4	7	5	25	0,2	2	18°	105125	▲	▲

范例刀柄

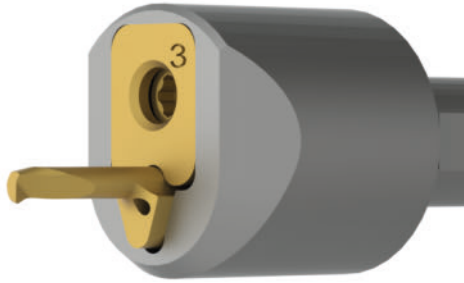
Example toolholder

产品型号 Part number	d	l_1	h	l_4	HWS
B105.0010.01	10	75	9	50	105123 • 105124 • 105125

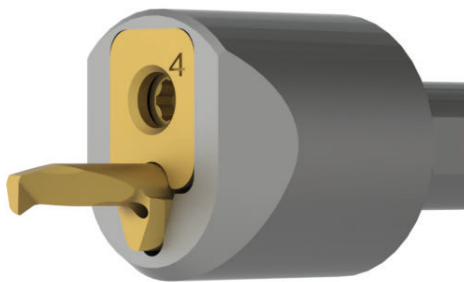
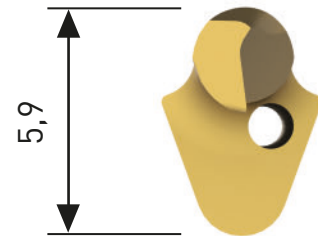
不同之处: 更多可能

THE DIFFERENCE: MORE POSSIBILITIES

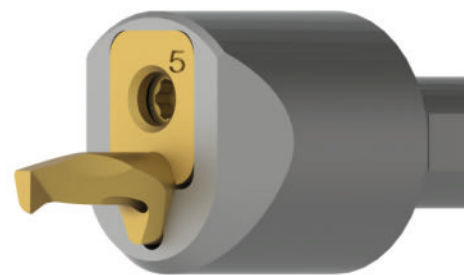
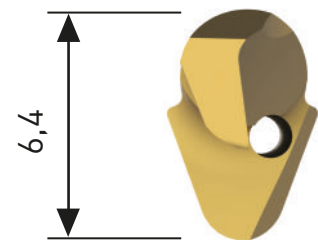
- **套件有三个夹紧元件
适用于不同的刀片尺寸**
Kit with three clamping elements for different insert sizes
- **整个系列具有较高的刚性
在刀片端面上夹紧**
High rigidity of the entire system due to clamping wedge on insert face
- **刀片可以在不拆下刀柄的情况下进行更换**
Inserts can be changed without removing the holder



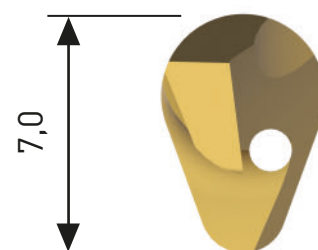
尺寸 3
Size 3

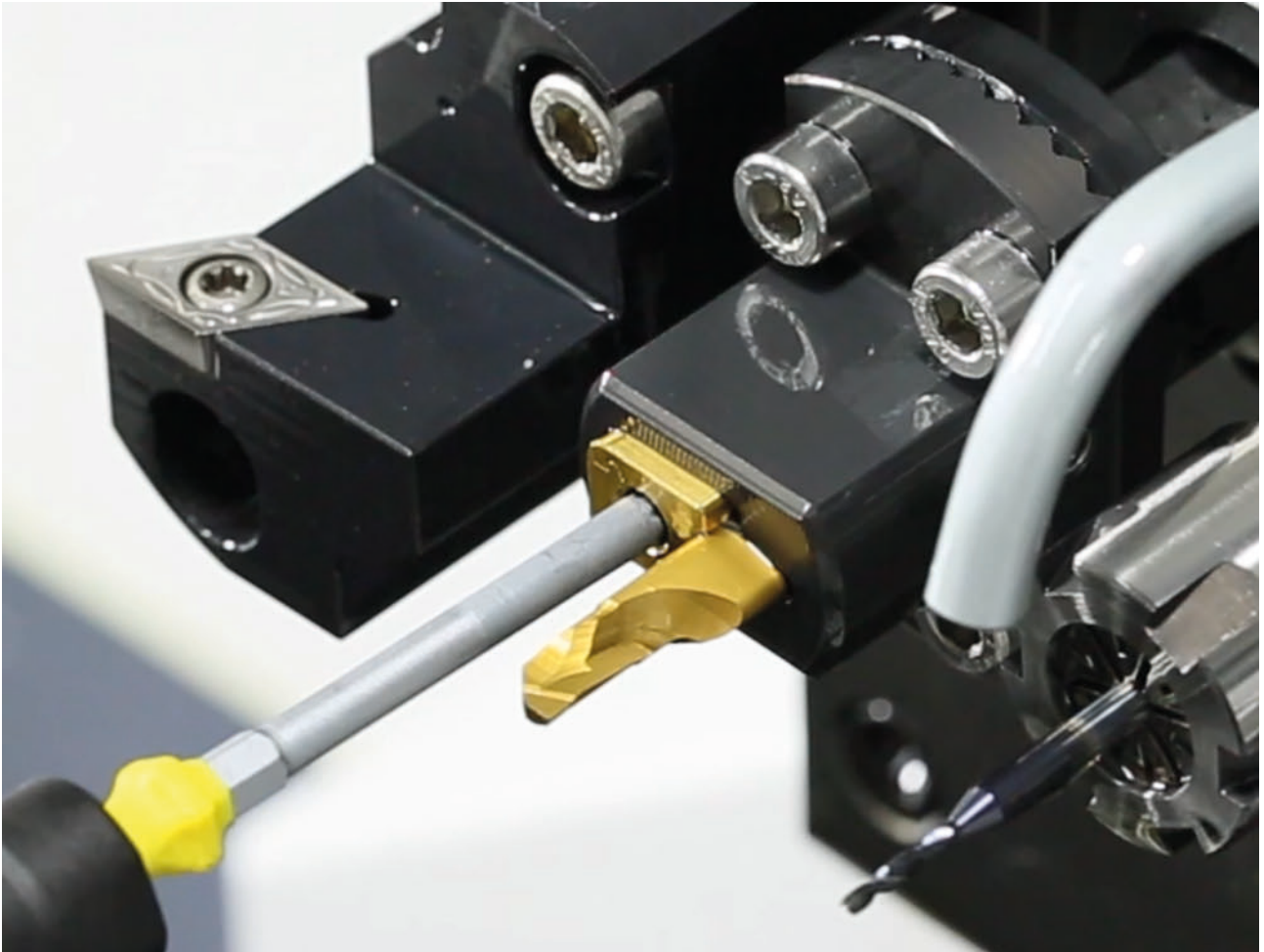


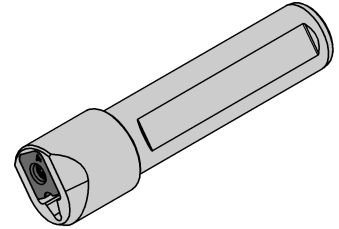
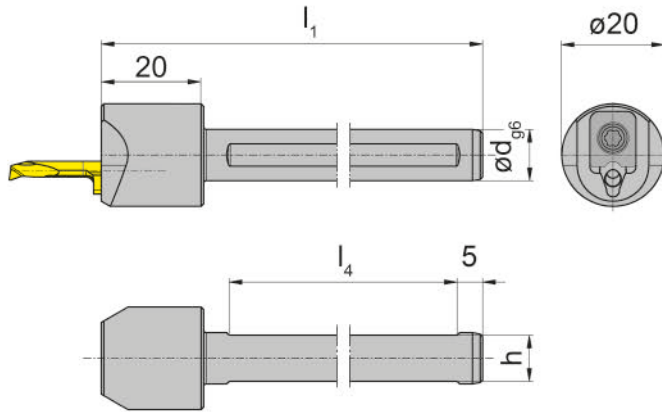
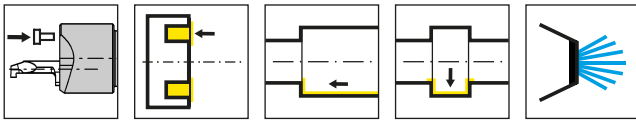
尺寸 4
Size 4



尺寸 5
Size 5





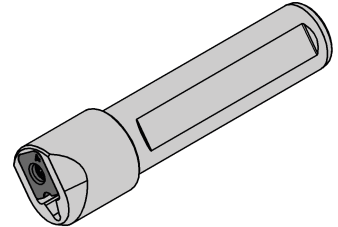
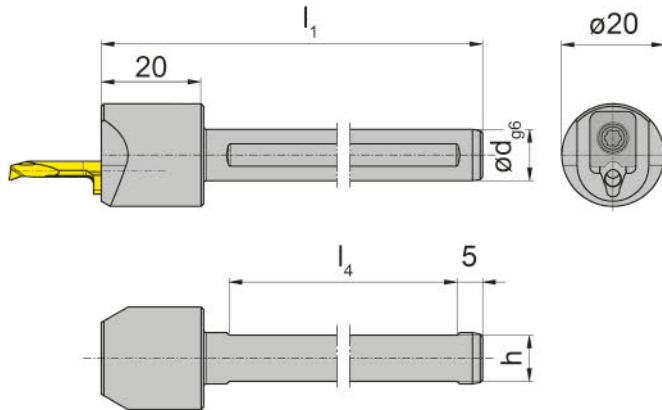
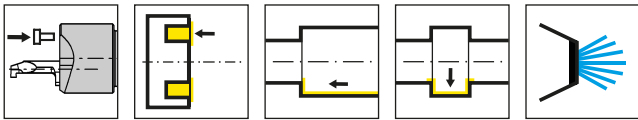


产品型号 Part number	d	h	l ₁	l ₄	HWS
B105.0010.S.SET	10	9	80	50	105123 • 105124 • 105125
B105.0012.S.SET	12	11	80	50	105123 • 105124 • 105125
B105.0016.S.SET	16	14	80	50	105123 • 105124 • 105125
B105.0020.S.SET	20	18	90	55	105123 • 105124 • 105125
B105.0022.S.SET	22	20	90	55	105123 • 105124 • 105125
B105.0025.S.SET	25	23	100	55	105123 • 105124 • 105125
B105.0028.S.SET	28	26	120	55	105123 • 105124 • 105125

配件

Spare Parts

刀柄 Toolholder	螺钉 Screw	夹紧元件 Clamping element	TORX PLUS® 扳手 TORX PLUS® Wrench
B105...	030.0000.1157	010.0105.03 010.0150.04 010.0150.05	T15PW



产品型号 Part number	d	h	l ₁	l ₄	HWS
BU105.0500.S.SET	.500"	10,7	80	50	105123 • 105124 • 105125
BU105.0625.S.SET	.625"	13,875	80	50	105123 • 105124 • 105125
BU105.0750.S.SET	.750"	17,05	90	55	105123 • 105124 • 105125
BU105.1000.S.SET	1"	23,4	90	55	105123 • 105124 • 105125

尺寸单位为英寸和毫米
Dimensions in inch and mm

配件

Spare Parts

刀柄 Toolholder	螺钉 Screw	夹紧元件 Clamping element	TORX PLUS® 扳手 TORX PLUS® Wrench
BU105...	030.0000.1157	010.0105.03 010.0150.04 010.0150.05	T15PW



找到您合适的刀具解决方案

FIND YOUR RIGHT
TOOLING SOLUTION NOW.

horn-group.com

DEUTSCHLAND, STAMMSITZ

GERMANY, HEADQUARTERS

—

Hartmetall Werkzeugfabrik
Paul Horn GmbH
Horn-Straße 1
D-72072 Tübingen

Tel +49 7071 / 70040

Fax +49 7071 / 72893

info@de.horn-group.com

horn-group.com

CHINA

—

HORN (Shanghai) Trading Co. Ltd.
Room 905, No. 518 Anyuan Road, P.R.
of
China Putuo District, Shanghai 200060
上海市安远路518号905室 邮编：200060

Tel +86 21 52833505 ; 52833205

Fax +86 21 52832562

info@phorn.cn

www.phorn.cn